

# Situational Awareness Analysis of Dental Students During Covid-19 Pandemic in Dental Hospital Universitas Airlangga

Vankalayya Yastriza Dayusmara<sup>1</sup>, Andra Rizqiawan<sup>2</sup>, Muhammad Subhan Amir<sup>2</sup>

<sup>1</sup>Undergraduate Student, Faculty of Dental Medicine, Universitas Airlangga

<sup>2</sup>Department of Oral and Maxillofacial Surgery, Faculty of Dental Medicine, Universitas Airlangga



## INTRODUCTION

Covid-19 pandemic has affected dental practice due to high risk of virus exposure, including to dental medicine students. Spread control of Covid-19 virus during dental procedure can be done with several protocols such as usage of Personal Protective Equipment (PPE), Extraoral Suction Unit, and Room modification into negative pressure. These changes require good perception, comprehension, and projection skills from dental students when carrying out clinical training, which can be assessed as Situational Awareness.

## METHODS

Data collection were conducted using Quantitative Analysis of Situational Awareness (QUASA) questionnaire to final year pre-clinical dental students and clinical dental students of Faculty of Dental Medicine University Airlangga. Our questionnaire were validated and checked for its reliability with Pearson's correlation and Cronbach's alpha respectively. We analyzed the situational awareness calibration characteristic, and situational awareness level, and compared between the two groups.

## RESULTS

### I. Validity and Reliability Test

Item	r count	r table	remark
1	0,1214237	0,1161	Valid
2	0,2333923	0,1161	Valid
3	0,195546	0,1161	Valid
4	0,0925198	0,1161	Not Valid
5	0,2831645	0,1161	Valid
6	0,2853815	0,1161	Valid
7	0,1750532	0,1161	Valid
8	0,3145549	0,1161	Valid
9	0,1321817	0,1161	Valid
10	0,2925927	0,1161	Valid
11	0,2187491	0,1161	Valid
12	0,3095054	0,1161	Valid
13	0,1726867	0,1161	Valid
14	0,0483683	0,1161	Not Valid
15	0,2688413	0,1161	Valid
16	0,2210386	0,1161	Valid
17	0,0510551	0,1161	Not Valid
18	0,1246684	0,1161	Valid
19	0,0798298	0,1161	Not Valid
20	0,1422836	0,1161	Valid

RELIABILITY TEST		
References Value	Cronbach's Alpha Value	Conclusion
0,70.	0,921425191	Reliable

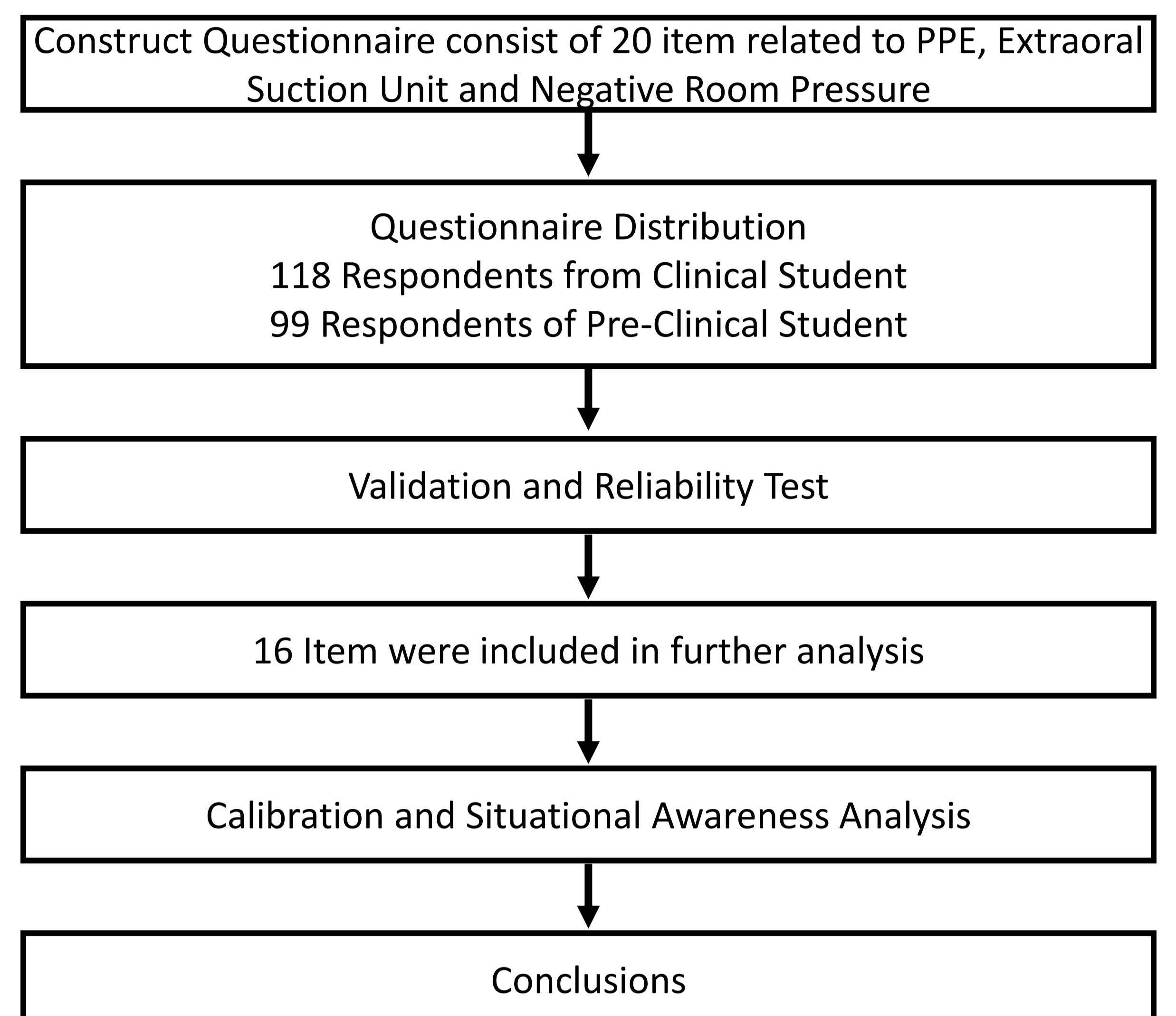
## CONCLUSIONS

1. Situational Awareness Calibration Characteristic showed over-confident profile in both groups.
2. Situational awareness of Clinical dental Students are better than pre-clinical student.
3. Further study regarding factors affecting Situational Awareness such as educational background, information and motivation were needed to elaborate the actual factors.

## OBJECTIVES

We aim to compare situational awareness of dental students during COVID-19 pandemic between pre-clinical dental students and clinical dental students.

## RESEARCH FLOW



### II. Pre – Clinical Students

*Actual accuracy*

$$= \frac{\text{Total of correct answer}}{\text{Total score}} \times 100\%$$

$$\text{Actual accuracy} = \frac{982}{1584} \times 100\%$$

**Actual accuracy = 61,99%**

*Perceived accuracy*

$$= \frac{\text{Total of confidence score}}{\text{Total score}} \times 100\%$$

$$\text{Perceived accuracy} = \frac{1215,6}{1584} \times 100\%$$

**Perceived accuracy = 76,74%**

*Situational Awareness*

$$= \frac{\text{Total (confidence score of correct answer)}}{\text{Total score}} \times 100\%$$

$$= \frac{738}{1584} \times 100\%$$

**Situational Awareness = 46,63%**

### III. Clinical Students

*Actual accuracy*

$$= \frac{\text{Total of correct answer}}{\text{Total score}} \times 100\%$$

$$\text{Actual accuracy} = \frac{1178}{1888} \times 100\%$$

**Actual accuracy = 62,39%**

*Perceived accuracy*

$$= \frac{\text{Total of confidence score}}{\text{Total score}} \times 100\%$$

$$\text{Perceived accuracy} = \frac{1515,6}{1888} \times 100\%$$

**Perceived accuracy = 80,28%**

*Situational Awareness*

$$= \frac{\text{Total (confidence score of correct answer)}}{\text{Total score}} \times 100\%$$

$$= \frac{955,6}{1888} \times 100\%$$

**Situational Awareness = 50,61%**

### IV. Calibration Curve

